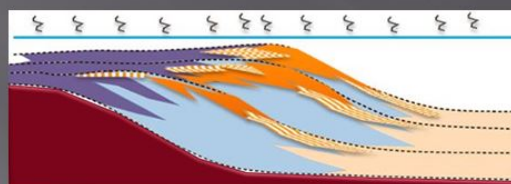
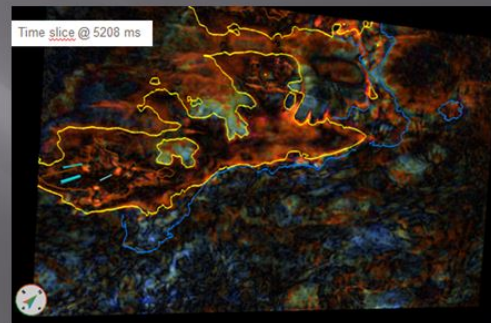
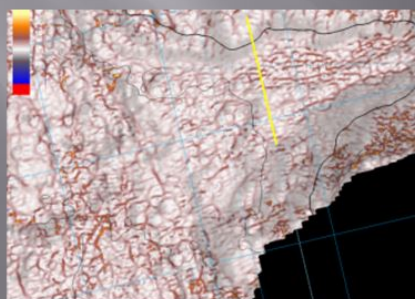
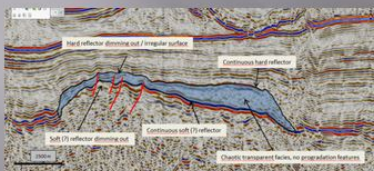
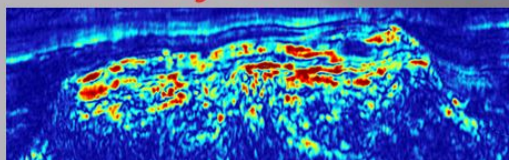
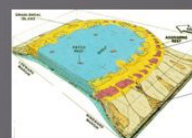




Carbonate seismic interpretation and sequence stratigraphy applied to hydrocarbon exploration



21 – 23 Gennaio 2019, ore 9.00 18.00 – Aula 12

Carbonate seismic interpretation and sequence stratigraphy applied to hydrocarbon exploration

Marcello Badalì, Stratigraphy and
Sedimentology Group, Exploration
Technical Services, Repsol

*Il corso è dedicato agli studenti del corso del secondo anno della
Laurea Magistrale in Geologia di Esplorazione e ai dottorandi.
Per informazioni rivolgersi a: sabina.biggi@uniroma1.it*